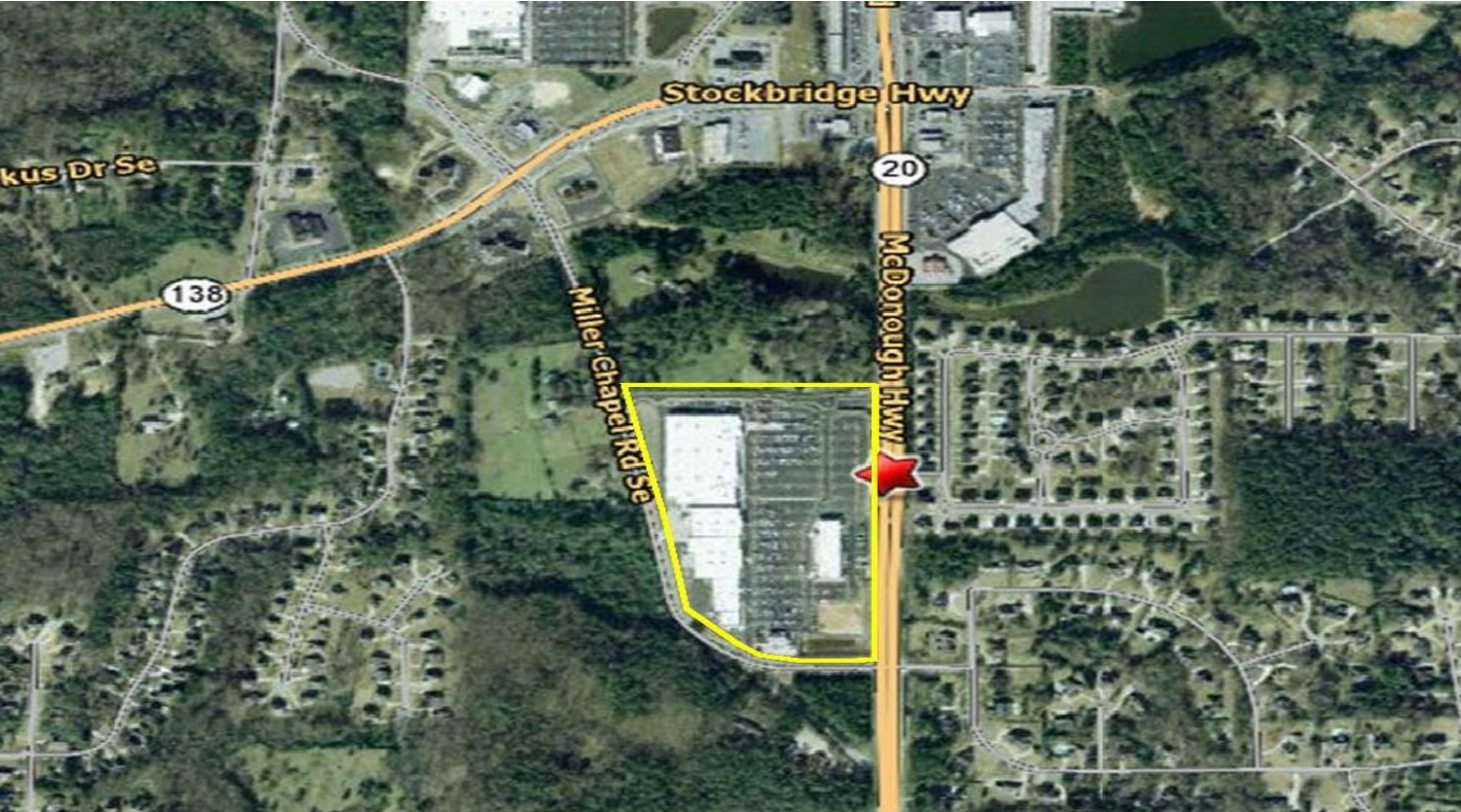


We know retail.



Traffic Counts:

GA Hwy. 20	28,610 ADT
I-20	68,198 ADT
Hwy. 138	16,990 ADT

GLA: 252,645 Sq. Ft.

Tenants: Target, Ross, Sports Authority, Sears Home Appliance, Famous Footwear, Mattress Firm, Kirkland's, Anytime Fitness, Panda Express, Fedex/Kinko's, Cartridge World, Olan Mills, By Design, Smoothie King, Classic Nails, Conyers Chiropractic, AT&T

DEMOGRAPHICS

2010	3 Mile	5 Mile	7 Mile
Population	36,654	85,419	129,146
Households	12,697	29,846	44,999
Avg. HH \$	\$82,580	\$76,461	\$75,734

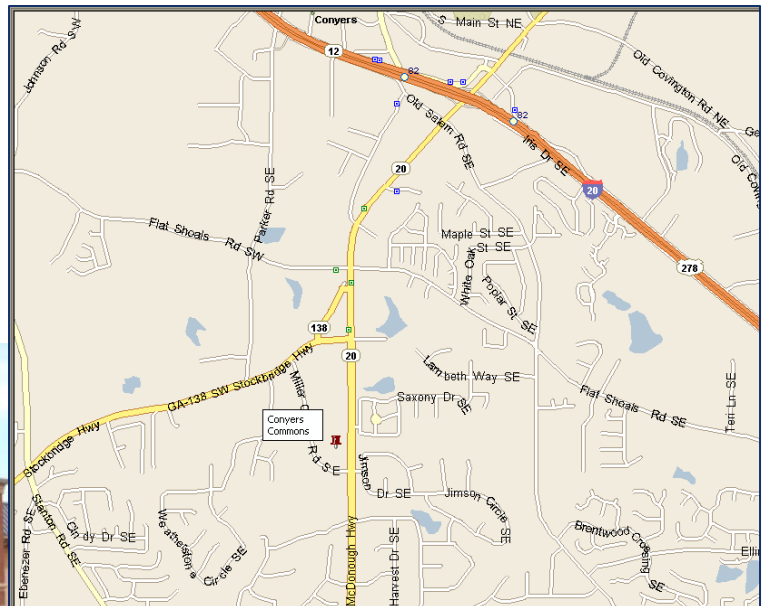
•**High Quality Asset-** Developed in 2006 the center totals 252,645 square feet and is anchored by Target, Ross, and Sports Authority, Kirkland's, and Famous Footwear which accounts for 83% of the GLA.

•**Excellent Demographics** – Conyers Commons is surrounded by affluent residential neighborhoods with 29,590 households with an average income of \$81,449 within a 5 mile radius.

•**Conyers, GA** – Conyers is located approximately 25 Miles East of Atlanta at Highway 138/Hwy. 20 and Millers Chapel Road. Millers Chapel Road is slated to be a four (4) lane connector across I-20. Hwy. 138 is main retail corridor for Conyers.

Conyers Commons Conyers, Georgia

We know retail.



For Leasing Information Contact:

Lily Heimburger
 404-231-1335

Lily.heimburger@srsre.com